

PT Jayamas Medica Industri Tbk (OMED IJ)

Company Update FY2025

April 2026

Table of Contents

1	Executive Summary
2	Company Overview
3	Business Overview
4	Key Investment Highlights
5	Growth Strategies
6	Financials & Operations
7	Corporate Highlights & Public Engagements

EXECUTIVE SUMMARY



Executive Summary



PT Jayamas Medica Industri Tbk (OMED or "The Company") founded in early 2000s. Since then, OMED has become a **market leader** in the Indonesian medical equipment and supplies market with a diverse product offering product portfolio consists of around **3,750 Active SKUs**, supported by a **wide-reaching distribution network, which spans across 514 cities and 34 provinces** in Indonesia.

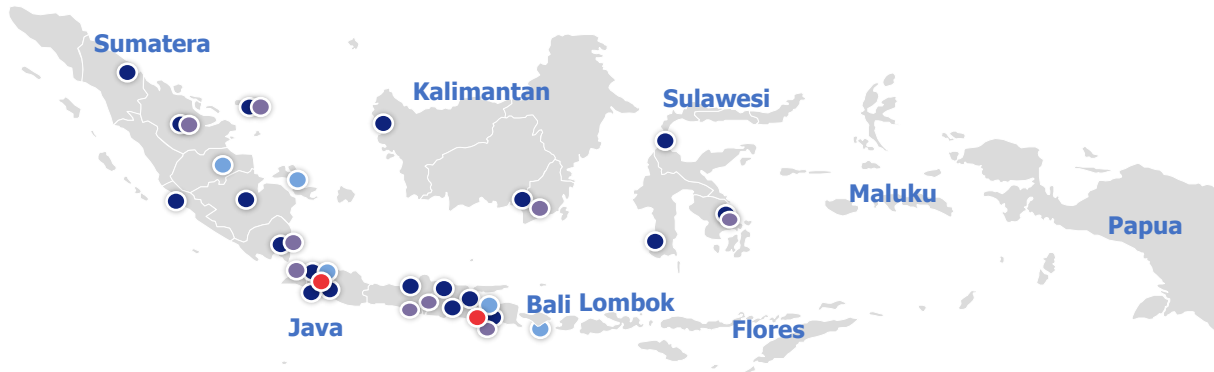
Product Category:

Disposable and Consumables 	Antiseptic and Dialysis 	Diagnostic and Equipment 	
Walking Aids & Rehab Care 	Woundcare 	Biotechnology & Lab 	Hospital Furniture

Supported with various number of brands:

OneMed Own Brands:

We serve all customers across Indonesia:



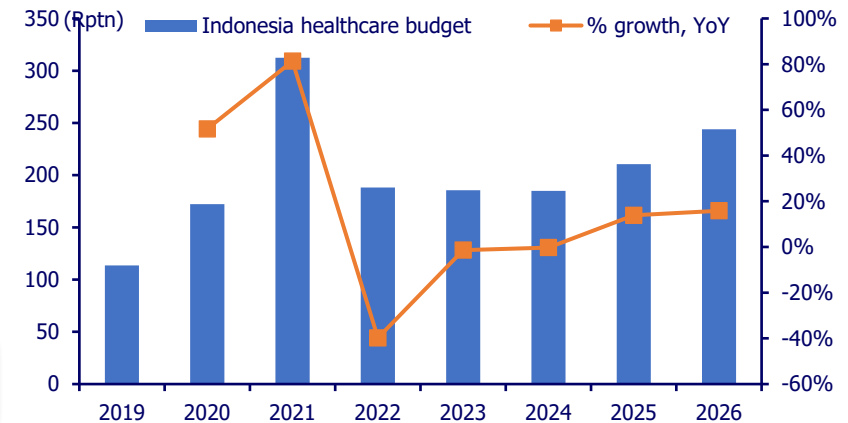
2 National Distribution Centers (1 Under Renovation)

22 Branch offices and warehouses

13 Sales offices

27 Omnichannel Stores

Backed with increasing awareness on healthcare:



COMPANY OVERVIEW



Management Profile

Board of Commissioners



Dr. Yacobus Jemmy Hartanto, MPH
President Commissioner
Years of Experience: **45**



Dr. Jemmy Hartanto is the founder of PT Jayamas Medica Industri Tbk. He started his career as a Doctor and he has been serving as the President Commissioner of OMED since 2004.



Siane Soetanto
Commissioner
Years of Experience: **39**



Siane Soetanto serves as the Commissioner since 2021. She worked in the banking industry as the Head of Credit Reviewer in Bank Dagang Nasional Indonesia & Marketing division in UOB Bali.



David A. Worth
Independent Commissioner
Years of Experience: **42**



David A. Worth was appointed as the Independent Commissioner of OMED in 2024. He is also currently serving as non-executive board member at Sentosa Capital Singapore.

Board of Directors



Dra. Herlien Sri Ariani
President Director
Years of Experience: **37**



Dra. Herlien Sri Ariani was appointed as the President Director of OMED in 2018. She started joining OMED as the Head of Production since 2001.



Leonard Hartanto
Operation Director
Years of Experience: **15**



Leonard Hartanto serves as the Operation Director since 2018 and is the eldest son of Dr. Jemmy Hartanto. He started working in OMED as the Purchasing Manager from 2013 to 2017.



Louis Hartanto
Marketing Director
Years of Experience: **13**



Louis Hartanto was appointed as the Marketing Director in 2021 and is the youngest son of Dr. Jemmy Hartanto. He initially started his career as the Director of PT Intisumber Hasil Sempurna since 2013.

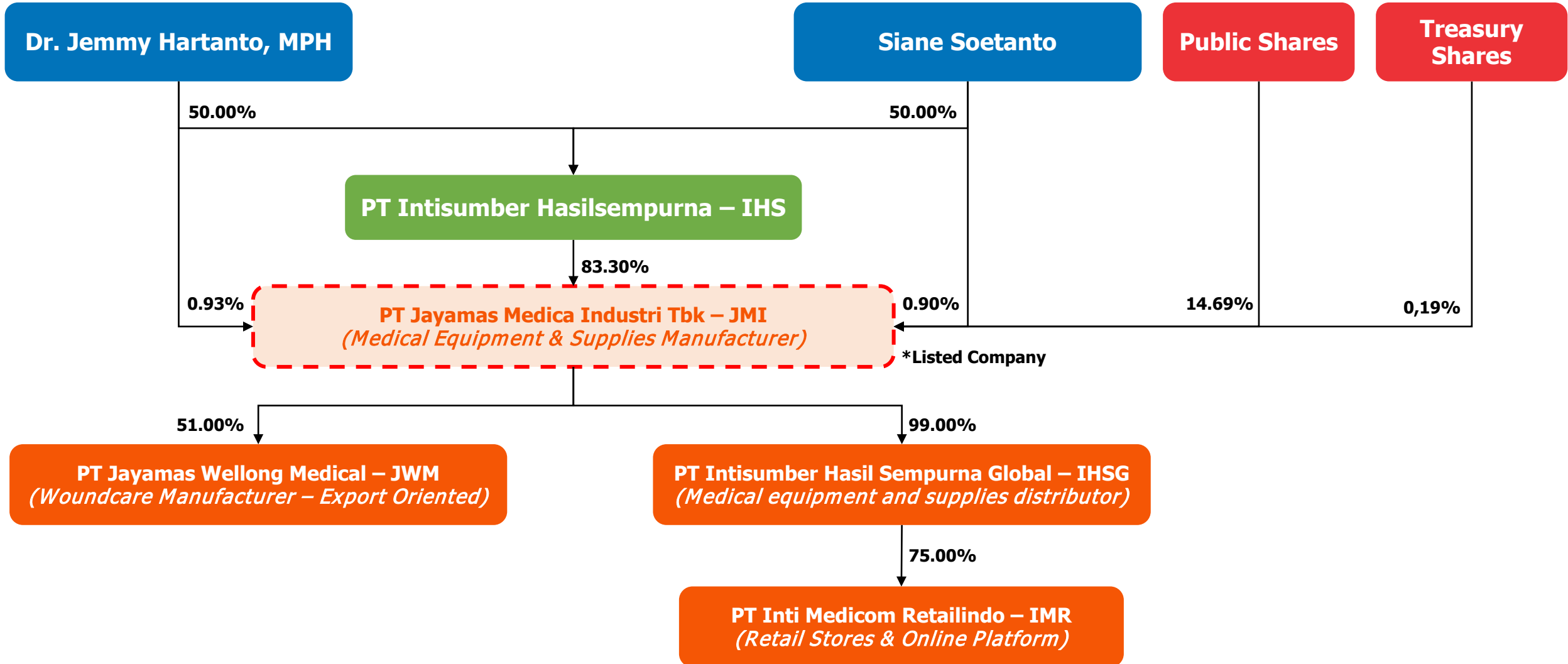


Eka Suwignyoo
Finance Director
Years of Experience: **25**



Eka Suwignyoo was first appointed as the Finance Director in 2022. Prior to joining, he has worked in several companies and held strategic position such as Finance Analyst in PT HM Sampoerna.

Shareholders Structure



Key Milestones

Our Key Accomplishment Since 1992



VENTURED
Distribution
Business



ESTABLISHED
the Brand in 2000



KRIAN
Total Area
2,200 sqm

KRIAN EXPANSION
Total Area
8,000 sqm



MOJOAGUNG
Total Area
23,707 sqm



IDX
Indonesia Stock Exchange

IPO
IDR 828 Billion

**GROUND
BREAKING**
New Facility
Batang, Central Java

EXPANDING
Mojoagung Facility

**JOINT
VENTURES**
with Foreign Entities

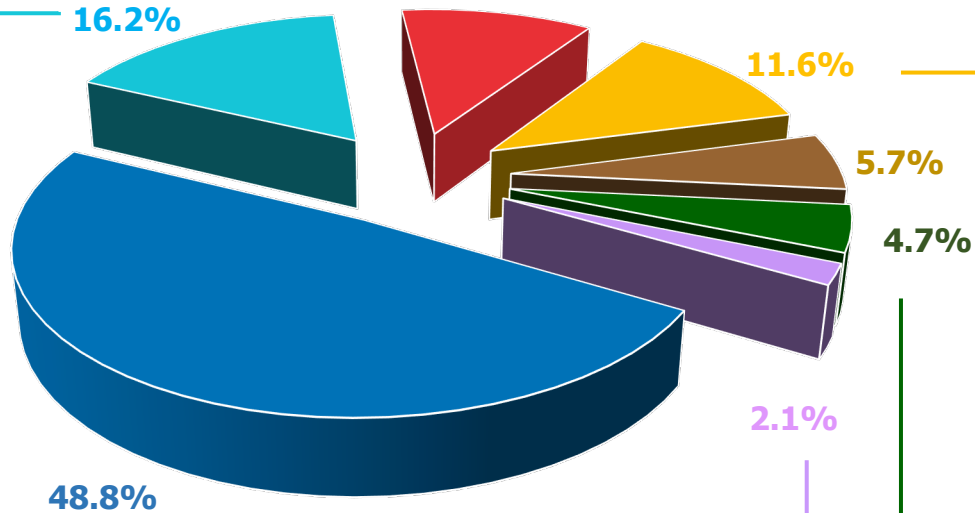
EXPANDING
Export to USA
and other
countries

COMMENCEMENT
of Jakarta NDC
(Coming Soon)

BUSINESS OVERVIEW



Sales by Products – FY2025



Wound Care

Includes Medical Cotton, Wound Bandage, First Aid Kit, Dressing Kit, gauze and others



Medical Disposable & Consumables

Includes medical gloves, masks, gowns and caps, syringes and needles, and others



Antiseptic & Dialysis

Includes liquid antiseptics and disinfectants, dialysis fluid, swabs and antiseptic wipes and gel



Diagnostic & Equipment

Includes thermometers, digital and manual tensimeters, weight scales and others



Biotechnology & Laboratory

Includes blood collection tubes, pregnancy tests, lab disposables, object glass and others



Walking Aids & Rehabilitation Care

Includes arm slings, crutches and hernia pants



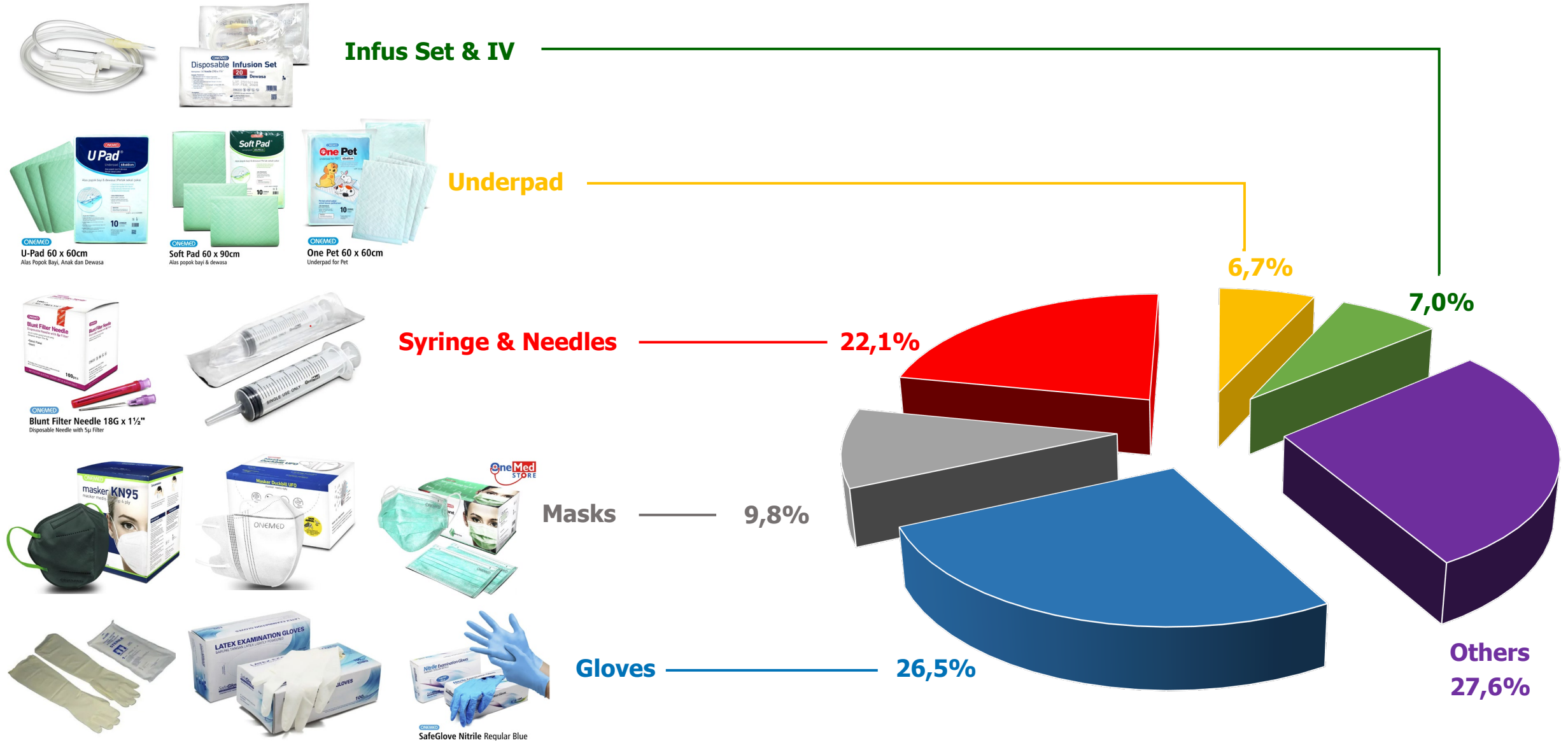
Hospital Furniture

Includes commode chairs, wheelchairs, and electric and non-electric patient beds



Product Portfolio

Sales by Products – FY 2025 (Top 5 in Medical Disposable & Consumables)



Production Capacity and Utilization Rate

Product Category	Product	Production Capacity (Unit '000.000)			Utilization Rate
		2023	2024	2025	2025
Disposable & Consumable	Mask	550	599	599	60.1%
	Underpad	60	75	75	34.6%
	Infusion Set and IV	50	50	50	58.0%
	Syringes and Needles	500	500	567	75.7%
	Foley Catheter	1,2	2,7	2,7	29.6%
Antiseptic & Dialysis	Antiseptic Liquid	24	24	24	84.2%
	Swab Products	770	964	964	50.6%
	Antiseptic Gel	5,0	5,0	5,0	48.0%
	Dialysis Fluid	2,7	2,7	2,7	33.3%
Biotechnology & Laboratory	Pregnancy Test	75	75	75	41.3%
	Blood Collection Tube	10	10	10	2.0%
Diagnostic & Equipment	Patient Monitors	0,003	0,003	0,003	33.3%
Wound Care	Wound Care	270	327	344	86.0%

Production Facility

KRIAN FACILITY



MOJOAGUNG FACILITY



BATANG FACILITY



	Krian	Mojoagung	Batang
Year of Commencing	2002	2016	2024
Manufacturing Facilities	21,000 Sqm	67,846 Sqm	35,650 Sqm
Location	East Java		Central Java
ISO			-
Production Focus	Syringes, Needles, Patient Monitor	Mask, Infus Set, IV, Underpad, Dialysis Fluid, Antiseptic & Disinfectant, Foley Catheter, Pregnancy Test, Wound Care, BCTs	Gauze

National Distribution Center

GRESIK, EAST JAVA



PULO GADUNG, JAKARTA



	Gresik	Jakarta
Year of Commencing	2007	May 2026 (Estimated)
Warehouse Size	±30,000 Sqm	±5,000 Sqm
Location	East Java	Jakarta
Coverage Area	Eastern Part of Indonesia	Western Part of Indonesia

Prominent Customer Profile

Our Major Global Customer & Revenue Contribution Each Segment

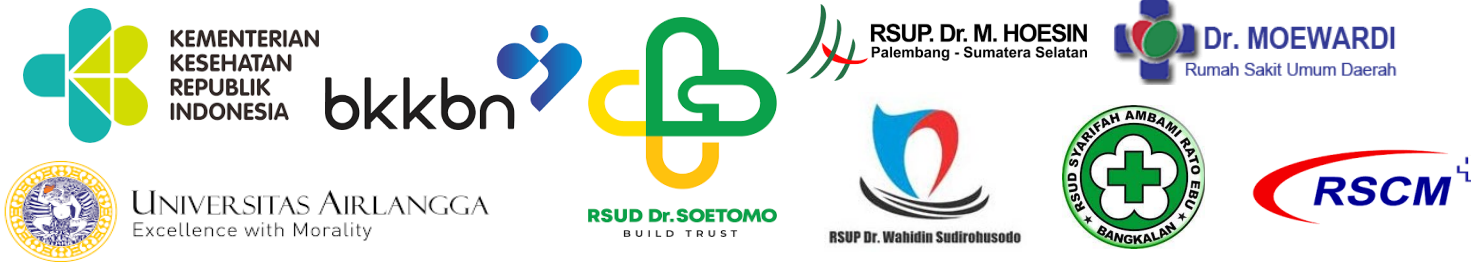
FY 2025

PRIVATE



68.1%

GOVERNMENT



31.5%



EXPORT



0.4%

OneMed's Diversified Revenue Structure Reflects Low Concentration Risk and Resilient Business Fundamentals

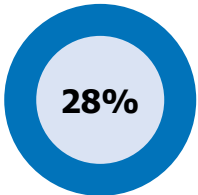
Revenue Channels

Sales by Channel



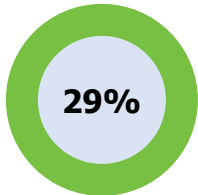
Distributors

- Distributor with e-Catalogue permits are able to on-sell to government, while distributor without permits may only supply our products to private institutions
- Supplies all products either directly via IHSG branches or indirectly via distributors in locations not covered by IHSG



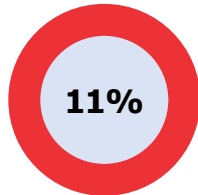
Medical Facilities

- Supplies all product for hospitals
- Supply of primarily blood collection tubes and medical supplies to private clinics, laboratories, and dentists
- Supplies all products either directly via IHSG branches or indirectly via distributors in locations not covered by IHSG



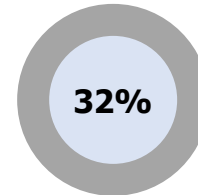
Retail customers

- Includes drugstores, SME businesses and other small retailers
- Supplies medical disposable, wound care, antiseptic, and disinfectant products, among others

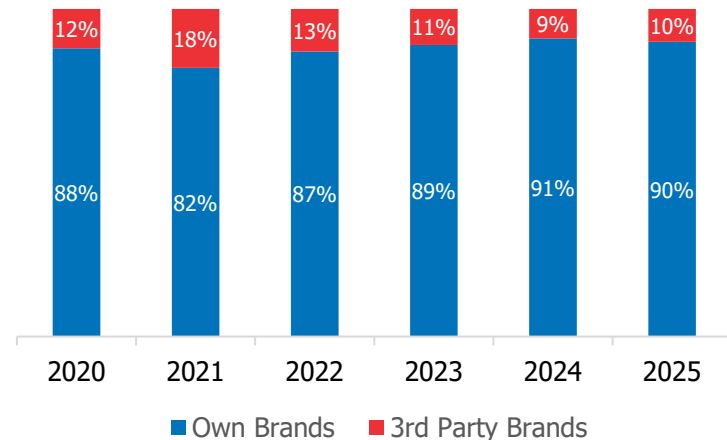


Government bodies and entities

- Supplies medical equipment and disposables to government bodies and entities such as Puskesmas



Sales by Brands



KEY INVESTMENT HIGHLIGHT



Competitive Advantages

ONE STOP SHOPPING

7 Product Categories

Approximately **3,750** Active SKUs



DIVERSE SALES CHANNELS



Distributors



Retail Customers



Export



Medical Facilities



Government Entities

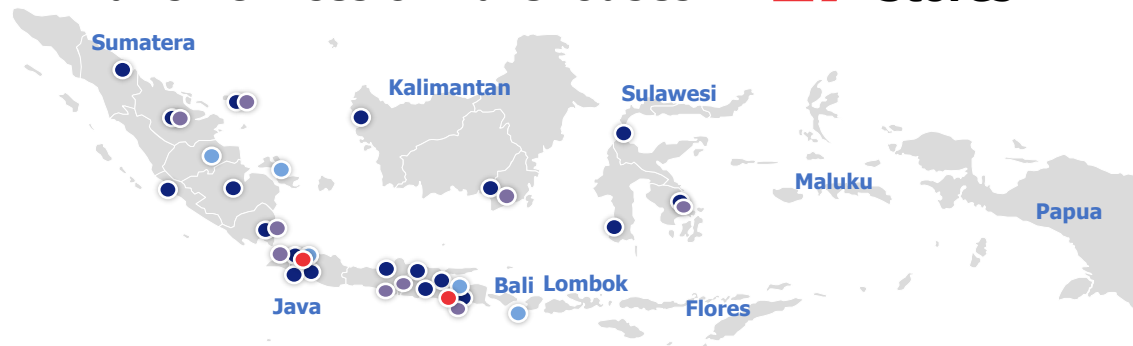
EXTENSIVE DISTRIBUTION

2 NDCs (1 Under Renovation)

13 Sales Offices

22 Branch Offices & Warehouses

27 Stores



MANUFACTURING DIVISION

>40% Locally Manufactured Products (TKDN)

KRIAN



Focus in Syringes Production

MOJOAGUNG



Requires in Heavy Workers Production

BATANG



Focused in Fabrication Material (Gauze)

GROWTH STRATEGIES



Growth Strategies

IOL



Export to Philippines



New Store

OneMed HEALTH CARE **medicom**

NEW LOCATION

OneMed Medicom Purwokerto

Jl. Kom. Bambang Suprpto 21-23 Purwokerto

+62 811-3010-3451 | medicom.pwt@onemed.co.id

Astatama, Osmosis Bakery, RSIA Anugerah, Indomaret

NDC Jakarta

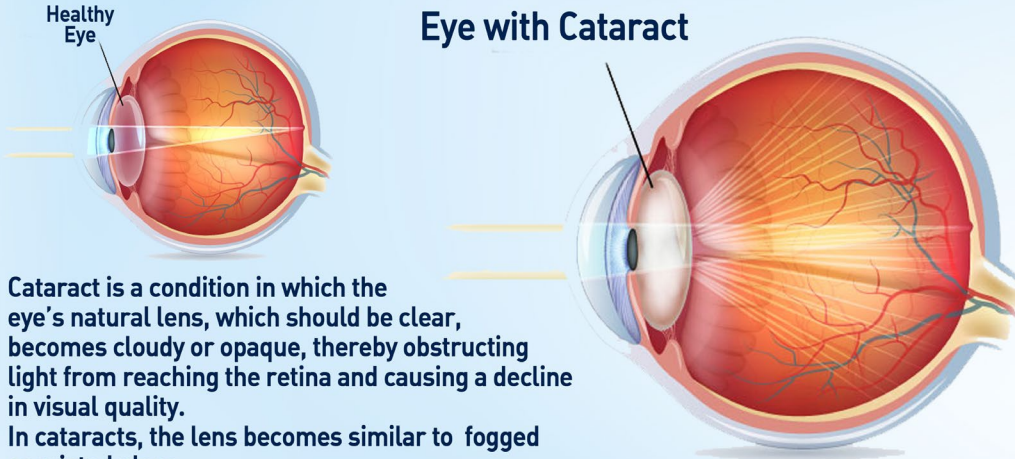


COMING SOON

Several growth initiatives are underway to strengthen our market position, including the upcoming launch of locally manufactured IOL, exports to the Philippines, new retail store openings, and establishment of a new NDC in Jakarta.

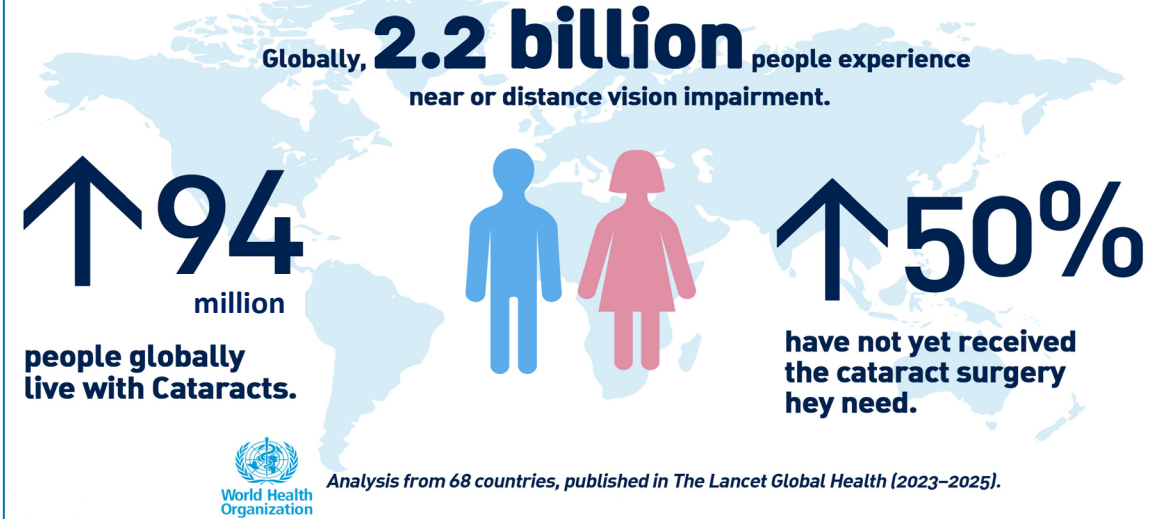
Large and Underserved Cataract Market : Indonesia

WHAT IS CATARACT?

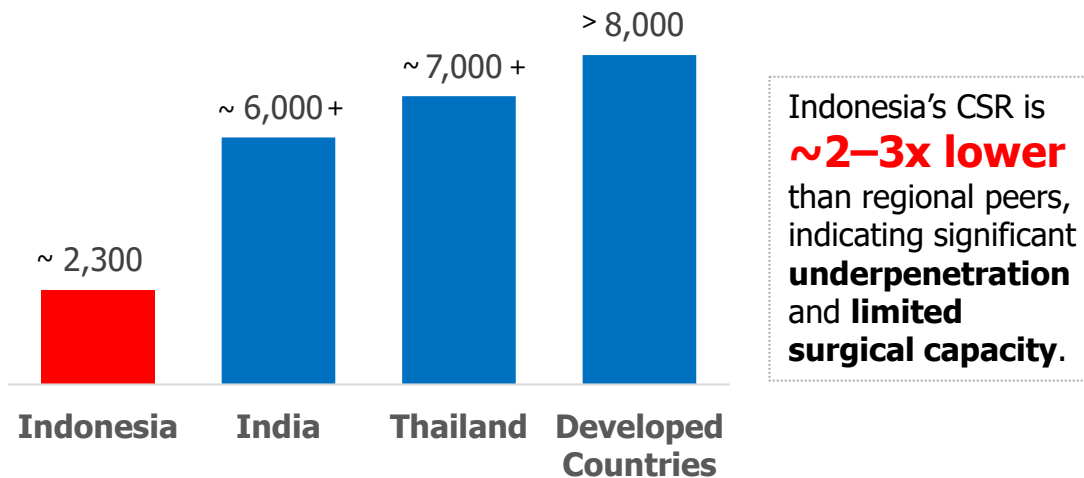


Cataract is a condition in which the eye's natural lens, which should be clear, becomes cloudy or opaque, thereby obstructing light from reaching the retina and causing a decline in visual quality. In cataracts, the lens becomes similar to fogged or misted glass.

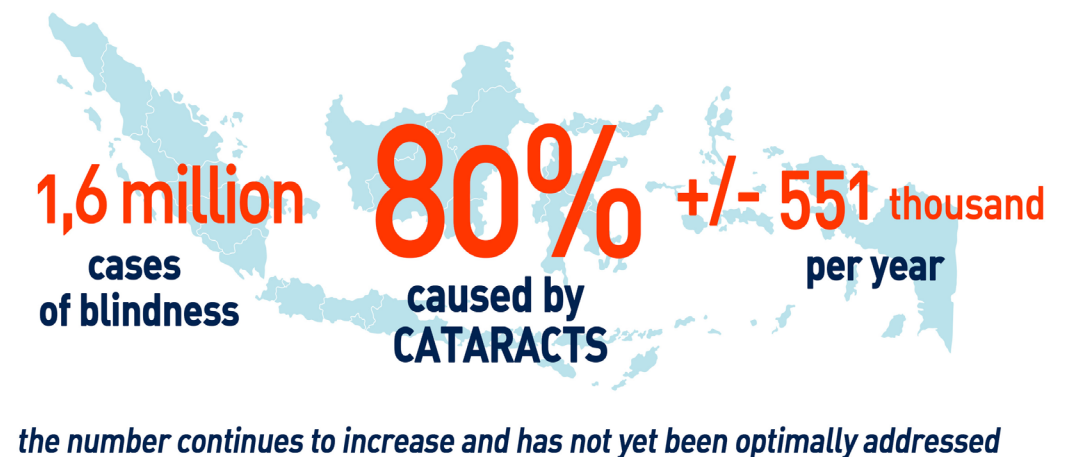
GLOBAL CATARACT STATISTICS



CATARACT SURGICAL RATE (CSR)



CATARACT IN INDONESIA



IOL: Essential Solution for Cataract Treatment

Launch Q4-2026

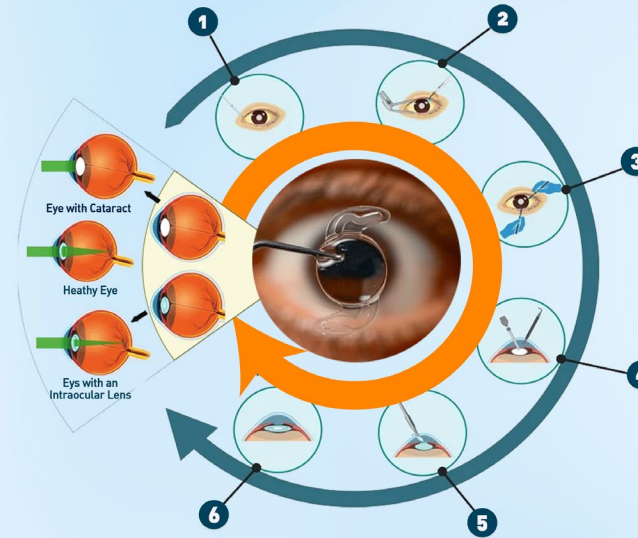
IOL AS THE SOLUTION

The only solution for cataracts is to remove the cloudy natural lens and replace it with a clear artificial lens, known as

IOL (Intraocular Lens)



IOL IMPLANT PROCEDURE



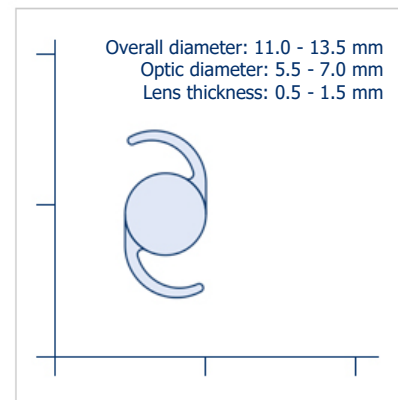
Stages of Intraocular Lens (IOL) Implantation

- 1 Anesthetic injection to the eye area to numb the patient's eye.
- 2 Use of an eyelid speculum before cleaning the surface of the eye with a saline solution.
- 3 Creation of a primary incision and a small auxiliary incision at the corneal margin.
- 4 Opening the lens capsule to expose the lens, followed by phacoemulsification (ultrasonic technique) to break up the lens, and subsequent removal of the fragments.
- 5 Implantation of the artificial intraocular lens into the appropriate position within the lens capsule.
- 6 Closure of the corneal incision to complete the surgical procedure.

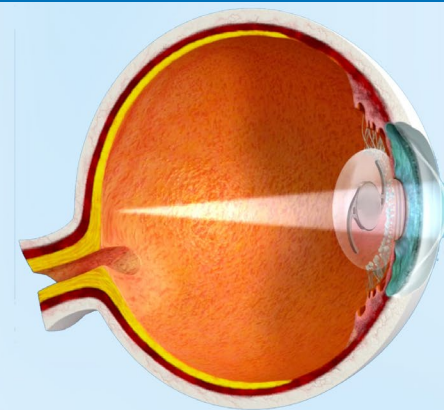
IOL SIZE COMPARISON

IMPLANTS

Size comparison
Dimensions in mm



BEFORE VS AFTER IOL IMPLANT



Capacity and Market Expansion

KRIAN



BATANG



MOJOAGUNG



Business Expansion Plan	Estimated Budget (IDR Billion)	Use of Proceed (IDR Billion)*	Details
Construction of Buildings, Procurement of Production Machinery and Equipment	IDR 425	IDR 321	Machinery acquisition (Mojoagung & Krian)
National Distribution Centre, Warehouse, and Retail Stores	IDR 100	IDR 80	Inventory for distribution network expansion
Development on Digital Marketing and Sales	IDR 32	IDR 20	Retail branches network expansion

Completion of the Mojoagung Plant Increases OneMed's Production Capacity by 12% of Total Capacity

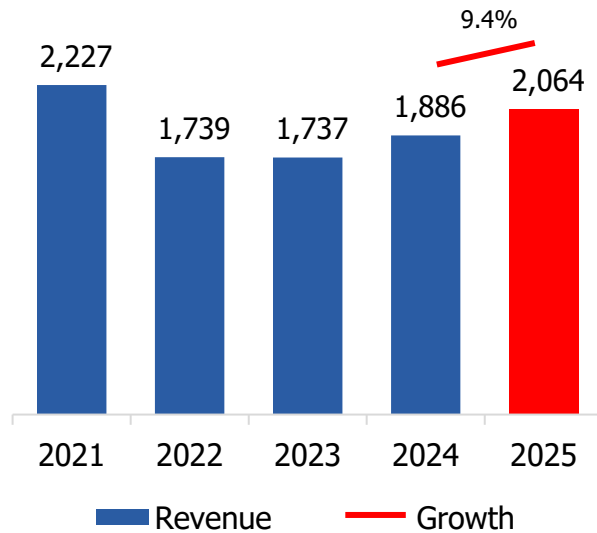
Note : *) Use of Proceed as of FY2025

FINANCIAL & OPERATIONS

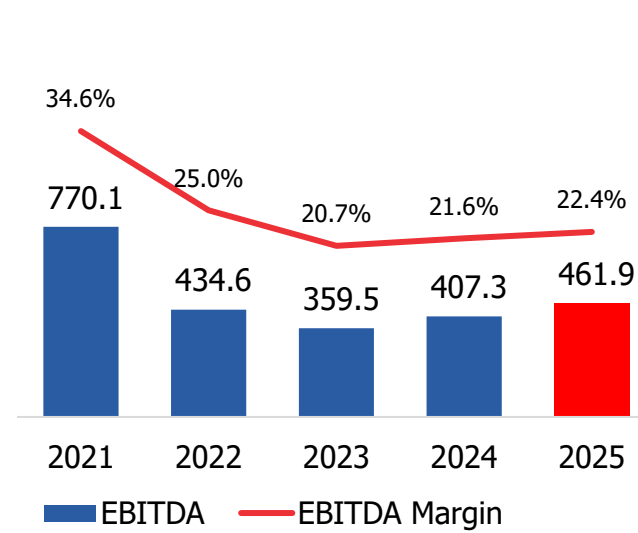


Financial Overview

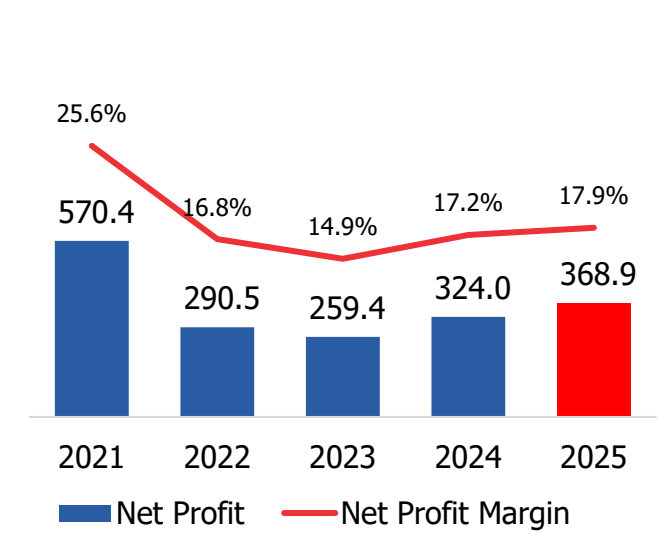
Revenue (In Billion Rupiah)



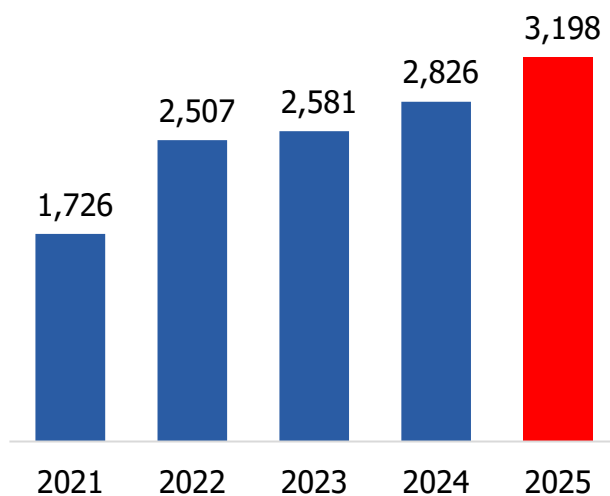
EBITDA (In Billion Rupiah)



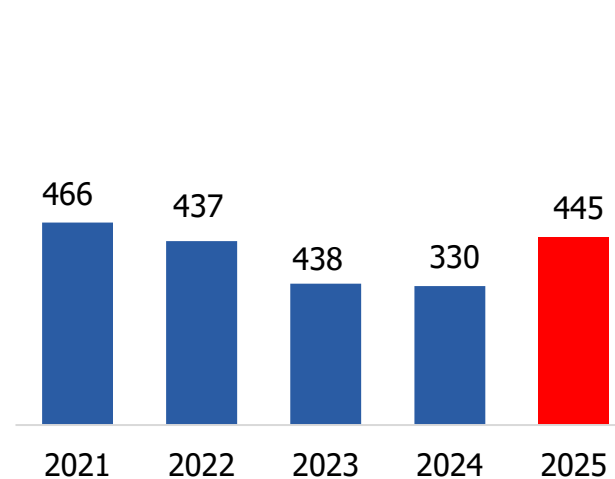
Net Profit (In Billion Rupiah)



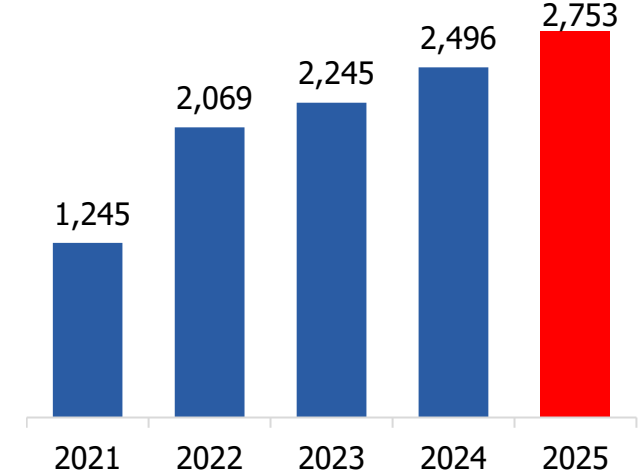
Assets (In Billion Rupiah)



Liabilities (In Billion Rupiah)



Equity (In Billion Rupiah)



Operational Highlight

Volume <i>(in thousand units)</i>	FY2024	FY2025	YoY
Sales Volume			
Disposable & Consumables	1,570,265	1,912,830	21.8%
Wound Care	465,627	543,297	16.7%
Antiseptic & Dialysis Fluid	378,390	408,252	7.9%
Diagnostic & Equipment	2,547	5,387	111.5%
Walking Aids & Rehab	1,686	1,886	11.9%
Biotech & Lab	122,800	338,101	175.3%
Hospital Furniture	70	64	-8.5%
Others	31	26	-14.9%
Total	2,541,417	3,209,842	26.3%

Price <i>(in IDR)</i>	FY2024	FY2025	YoY
ASP			
Disposable & Consumables	586	526	-10.3%
Wound Care	617	614	-0.5%
Antiseptic & Dialysis Fluid	546	555	1.5%
Diagnostic & Equipment	100,655	44,299	-56.0%
Walking Aids & Rehab	48,789	50,990	4.5%
Biotech & Lab	739	349	-52.8%
Hospital Furniture	581,452	667,799	14.9%
Others	22,226	55,844	151.3%

Sales <i>(in IDR)</i>	FY2024	FY2025	YoY
Total Sales			
Disposable & Consumables	920,870,668	1,006,452,139	9.3%
Wound Care	287,111,994	333,481,121	16.2%
Antiseptic & Dialysis Fluid	206,764,186	226,538,586	9.6%
Diagnostic & Equipment	256,402,395	238,625,730	-6.9%
Walking Aids & Rehab	82,268,439	96,176,331	16.9%
Biotech & Lab	90,797,610	118,105,159	30.1%
Hospital Furniture	40,927,357	42,986,471	5.0%
Others	679,392	1,451,364	113.6%
Total	1,885,822,041	2,063,816,901	9.4%

Key Performance Ratios

Key Ratios	2021	2022	2023	2024	2025
Profitability Ratios					
Revenue Growth	11.6%	-21.9%	-0.1%	8.6%	9.4%
Gross Profit Margin	40.6%	35.1%	31.8%	33.1%	34.8%
EBITDA Margin	34.7%	25.0%	23.1%	21.6%	22.4%
Net Profit Margin	25.6%	16.8%	14.9%	17.2%	17.8%
Return on Asset	33.0%	11.6%	10.0%	11.5%	11.5%
Return on Equity	45.8%	14.0%	11.5%	13.0%	13.4%
Liquidity and Solvency Ratios					
Current Ratio	5.5	9.6	15.2	7.7	10.4
Int. Bearing Debt to Equity Ratio	0.15	0.1	0.08	0.06	0.01
Debt to Equity Ratio	0.39	0.21	0.15	0.13	0.16
Efficiency Ratios					
Receivable Days	29	39	43	51	48
Inventory Days	112	161	186	174	202
Payable Days	48	58	29	24	31
Cash Conversion Cycle	93	141	200	201	220

Delivering Solid 2025 Results, Maintaining Steady Momentum into 2026

- 1. Revenue grew 9.4% YoY** to IDR 2.06 trillion, driven by **strong volume growth of 26.3%** across key segments
- 2. Volume expansion across portfolio**, led by:
 - Biotech & Lab (**+175.3%**) and Diagnostic & Equipment (**+111.5%**)
 - Core segment Disposable & Consumables (**+21.8%**)
- 3. ASP declined in several segments**, particularly:
 - Diagnostic & Equipment (**-56.0%**) and Biotech & Lab (**-52.8%**)
→ reflecting **product mix normalization and competitive dynamics**
- 4. Profitability remained resilient:**
 - Gross profit grew 15.0% YoY
 - Net income increased 13.9% YoY
- 5. Core segments remain resilient:**
 - Disposable & Consumables (**+9.3% sales**)
 - Wound Care (**+16.2%**) and Walking Aids & Rehab (**+16.9%**)
- 6. Days of AR improved to 48 days** (vs 51 days)
→ reflecting disciplined collection and effective credit management amid higher sales volume
- 7. Overall positioning:**
→ **Solid top-line growth with prudent working capital management**, maintaining readiness to support continued expansion

CORPORATE HIGHLIGHTS & PUBLIC ENGAGEMENTS



Corporate Highlights & Public Engagements



Bantuan diterima oleh Kepala Puskesmas Lokop Aceh Timur. Bantuan diserahkan langsung oleh Presiden Direktur PT Jayamas Medica Industri Tbk (OMED), Dra. Herlien Sri Ariani, APT didampingi oleh Menteri Kesehatan, Budi Gunadi Sadikin, S.Si., CHFC., CLU dan Bupati Aceh Timur Iskandar Usman Al-Farlaky, S.H.I., M.Si..

Follow : omed.idx



OMED salurkan alat bantu jalan Kursi Roda sebagai bentuk kepedulian dan berbagi kepada sesama di momen Lebaran.

Follow : omed.idx



OMED bersinergi membangun jembatan antara industri dan akademisi demi kemajuan teknologi medis Indonesia.

Follow : omed.idx

THANK YOU

PT Jayamas Medica Industri Tbk (OMED IJ)

CONTACT US



ir@onemed.co.id
corporate.secretary@onemed.co.id



<https://www.onemed.co.id/>



<https://www.tokopedia.com/onemed>



<https://shopee.co.id/onemed>



<https://omed.idx>